



# Rory M. Shaw Wetlands Park and Sun Valley Upper Storm Drain System Phase 1 Project Construction

## Meeting will start at 6:05PM

Spanish interpretation will be available during the meeting.

Phone Call-In Information:

Dial 669-900-6833 and Enter Meeting ID: 859 2060 2931





*Public Works*  
LOS ANGELES COUNTY

# Rory M. Shaw Wetlands Park and Sun Valley Upper Storm Drain System Phase 1 Project Construction

Supervisory District 3 and Council District 6

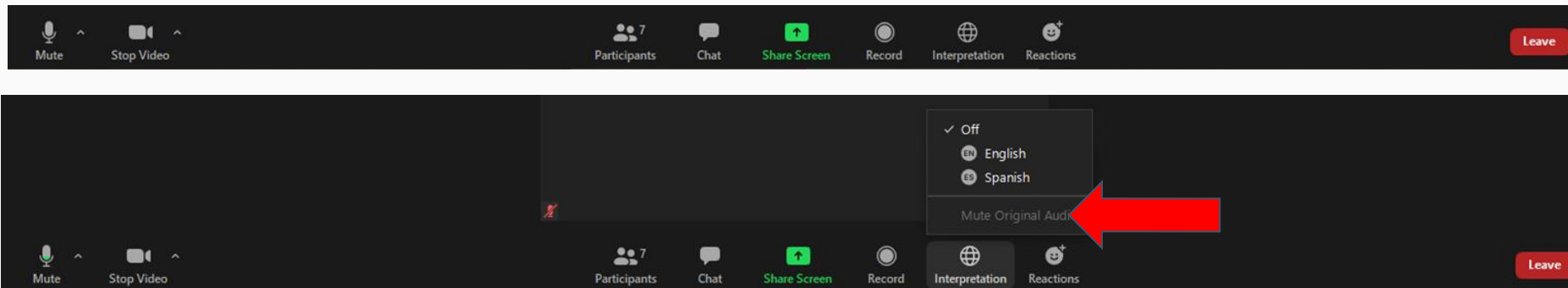


# Welcome, Instructions for Zoom

## *Bienvenidos, Instrucciones para Zoom*

We have two language audio channels available. English only speakers, please select English.

*Si solamente habla español, debe seleccionar un canal de idioma*



The meeting will have simultaneous interpreting, so you are welcome to comment in your native language.

*La junta será interpretada simultáneamente, así que le invitamos a que haga comentarios en su lenguaje nativo.*

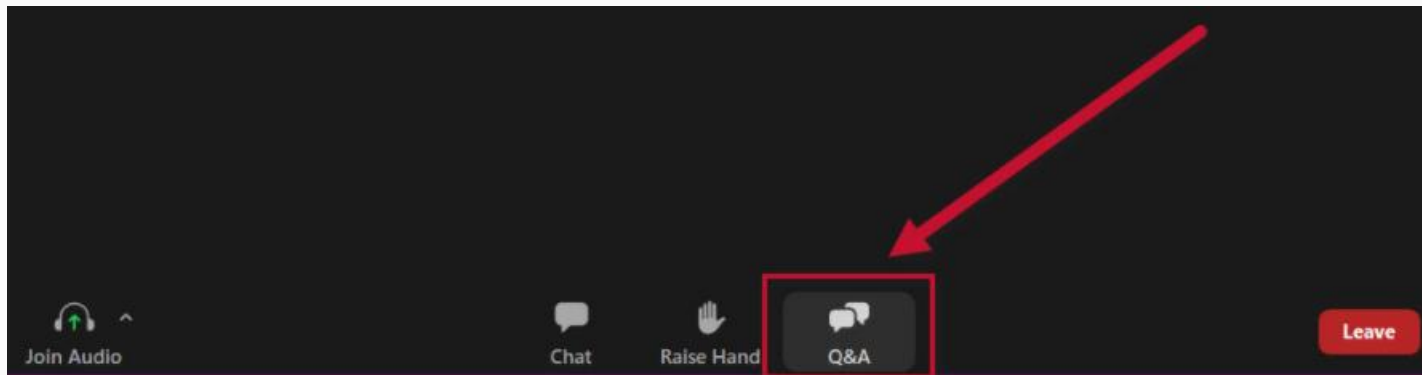
# AGENDA

1. Meeting Guidelines/Introductions/Opening Remarks
2. Overview of Sun Valley Watershed
3. Rory M. Shaw Wetlands Park Project Updates
4. Sun Valley Storm Drain Phase 1 Construction
5. How to Stay Connected
6. Questions and Answers

# **1. Introductions and Meeting Guidelines**

# Meeting Guidelines

1. All participants are muted.
2. The meeting is being recorded and will be posted, along with slides, on the Project website.
3. Please ask the panelists questions by typing them into the Q&A window. They will be answered during the Q&A section at the end.



# Introductions

- **Maria Chong-Castillo**  
**Public Works Deputy, Los Angeles County 3<sup>rd</sup> Supervisorial District**
- **Marcos Sanchez**  
**District Director, City of Los Angeles 6<sup>th</sup> Council District**
- **Kenny Chow**  
**Project Manager, Rory M. Shaw Wetlands Park**
- **Precious Crosby**  
**Project Manager, Sun Valley Upper Storm Drain Phase 1**
- **Samantha Salvia**  
**Meeting Facilitator**

## **2. Overview of Sun Valley Watershed**



# Sun Valley Watershed

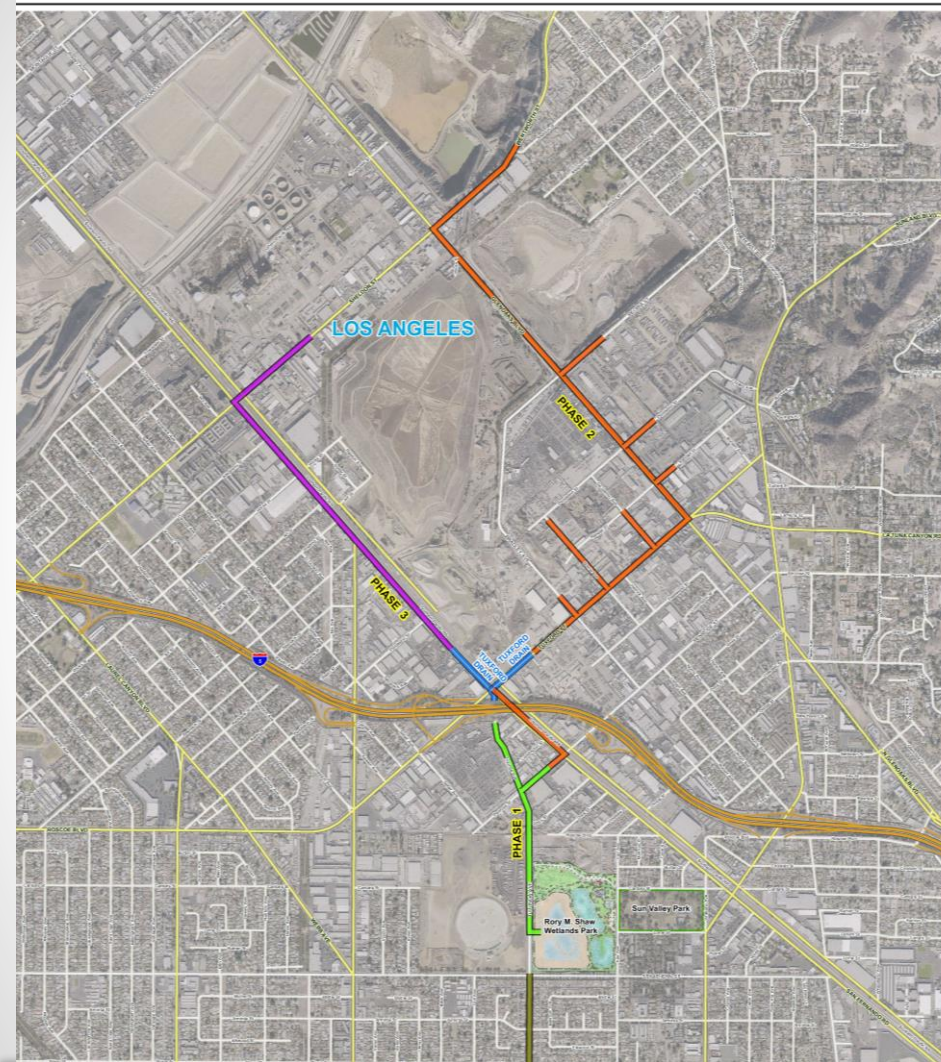


Intersection: Tuxford and San Fernando

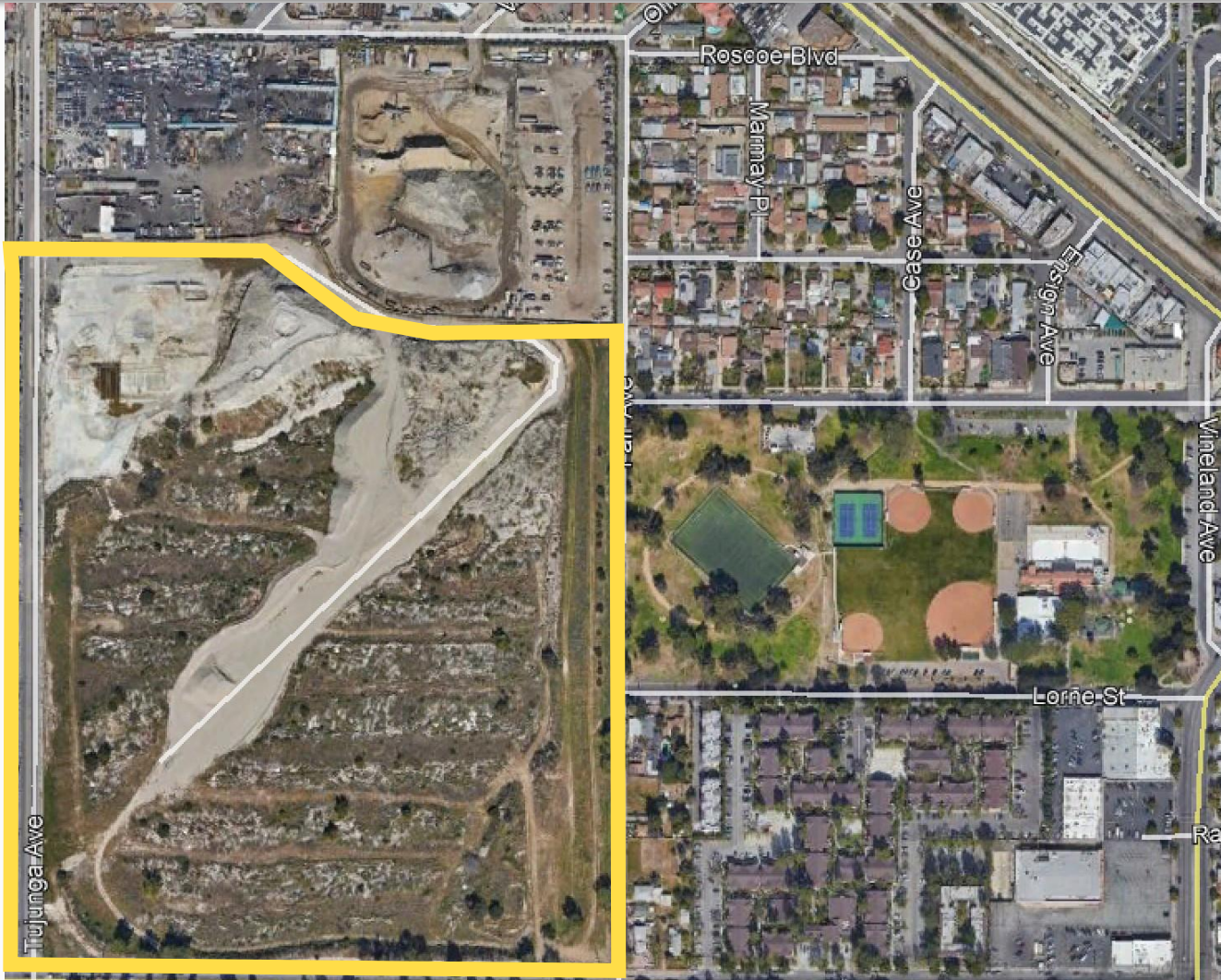


### **3. Rory M. Shaw Wetlands Park Project Updates**

# Sun Valley Upper Storm Drain & Rory M. Shaw Wetlands Park Concept



# Rory M. Shaw Wetlands Park Project Site



# Rory M. Shaw Wetlands Park Project Phasing

- Phase 1 (Site Investigations and Demolition): Completed
- Phase 2 (Rough Grading and Overexcavation): 2022-2026
- Phase 3 (Above-Ground Improvements): 2026-2028

# Rory M. Shaw Wetlands Park Phase 2 Design and Construction Details



- Design Plans and Construction for Rory Shaw Phase 2
  - Design Plan Completion: Spring 2021
  - Advertise and Award Process: Spring 2021 to Winter 2022
  - Construction Duration: Spring 2022 to Spring 2026 (4 years)
  - A separate, dedicated community meeting for Rory Shaw will be held (~February 2022)
- Construction Details
  - Excess sediment will need to be hauled off the site.
  - More details on truck hauling will be presented at a follow-up community meeting when more details are available.

# Rory M. Shaw Wetlands Park Phase 3 and Project Amenities



21-Acre Detention Pond

# Rory M. Shaw Wetlands Park Phase 3 and Project Amenities



Walking Paths and 10-Acre Wetlands



# Rory M. Shaw Wetlands Park Phase 3 and Project Amenities



15-Acre Open Space

# Rory M. Shaw Wetlands Park Phase 3 and Project Amenities



Playground Area

## **4. Sun Valley Storm Drain Phase 1 Construction**

# Sun Valley Watershed Upper Storm Drain Phase 1



# Sun Valley Watershed Upper Storm Drain Phase 1

## Project Limits:

- Tujunga Avenue between Strathern Street to 800 ft north Penrose Street
- Penrose Street from Tujunga Avenue to 300 ft west of San Fernando Road
- Goss Street 300 ft west of Tujunga Avenue
- All work will be constructed within the public road right of way

## Description of Work:

- Install 4,300 feet of underground 96- inch reinforced concrete storm drain pipes, connector pipes, catch basins and other drainage structures that will convey water to the future Rory Shaw detention ponds.
- Restore asphalt pavement, sidewalk, driveway and roadway striping.

# Sun Valley Watershed Upper Storm Drain Phase 1

## Sequence of Work for all stages:

- Stage equipment and work areas; set up traffic control measures
- Removals of concrete, curb ramps, sidewalks
- Roadway excavation
- Construct storm drain
- Install connector pipes, catch basins and all-associated drainage structures
- Restore asphalt pavement, sidewalk, driveway and roadway striping

## Construction Information:

- Contractor: KEC Engineering
- Construction Duration: May 25, 2021 to April 2022 (11 months)
- Construction Hours: 7:00 a.m. to 3:30 p.m.

# Sun Valley Watershed Upper Storm Drain Phase 1



## Construction Stages:

Stage 1 

Stage 2 

Stage 3 

Stage 4 

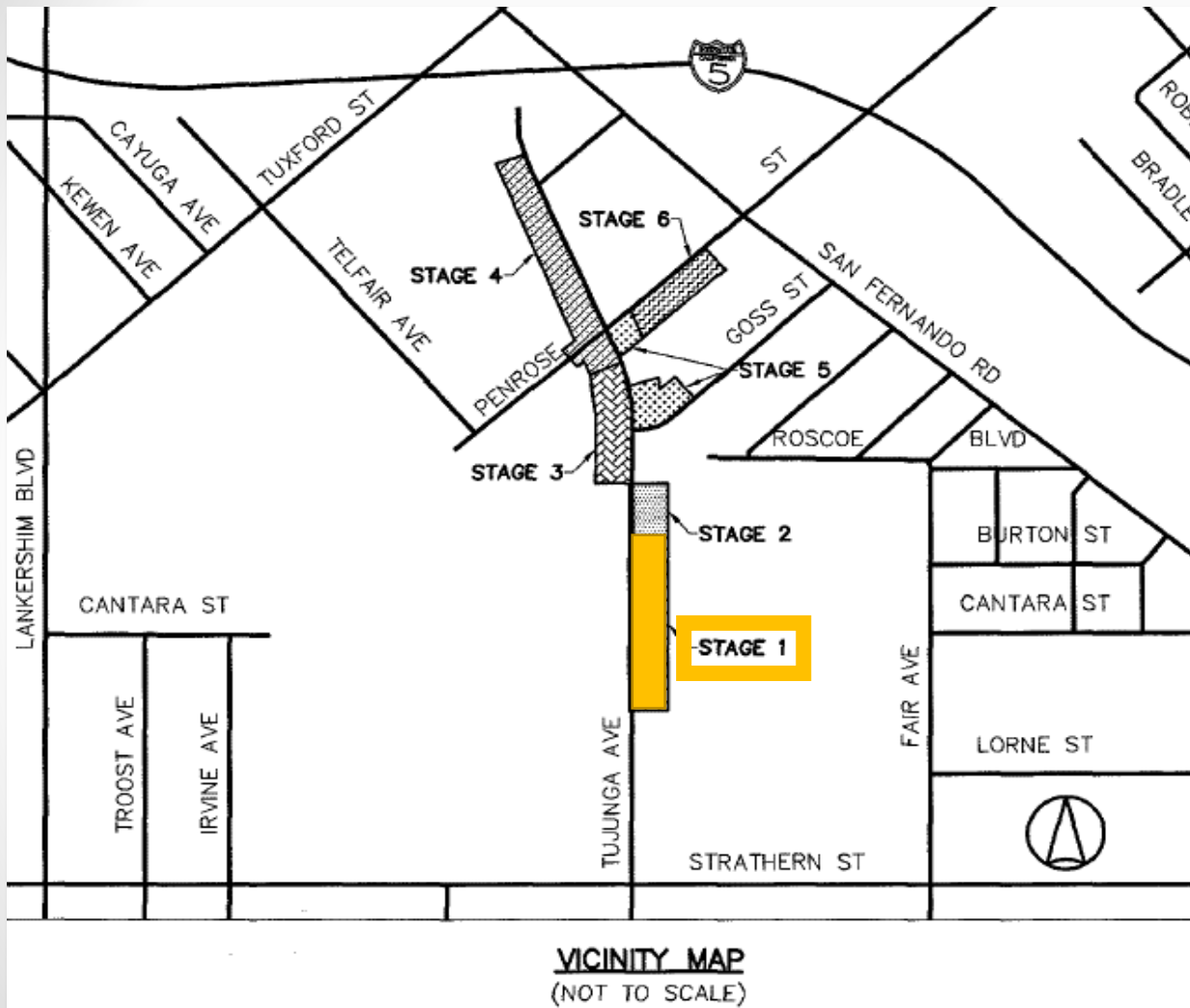
Stage 5 

Stage 6 

## During all stages:

- Pedestrian access will be maintained.
- Driveway access will be maintained.

# Sun Valley Watershed Upper Storm Drain Phase 1



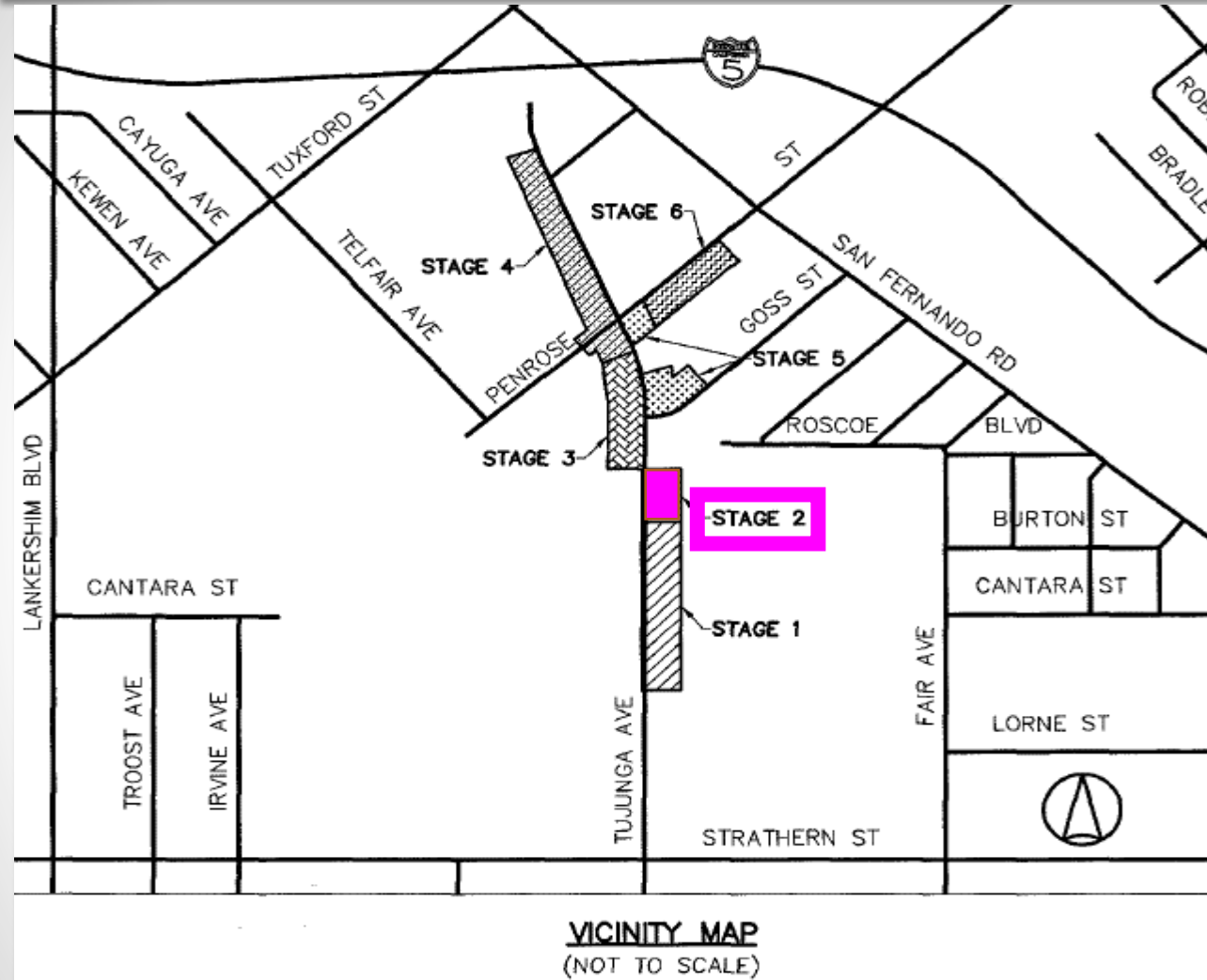
## Stage 1 :

Install 975 feet mainline pipe on Tujunga Avenue from Strathern Street to south of Goss Street

- Tujunga Avenue southbound approach will be opened for one lane of traffic.
- Northbound approach will be closed to through traffic at Strathern Street
- Traffic signs will be posted for detour.
- Construction duration is estimated to be 16 weeks.



# Sun Valley Watershed Upper Storm Drain Phase 1

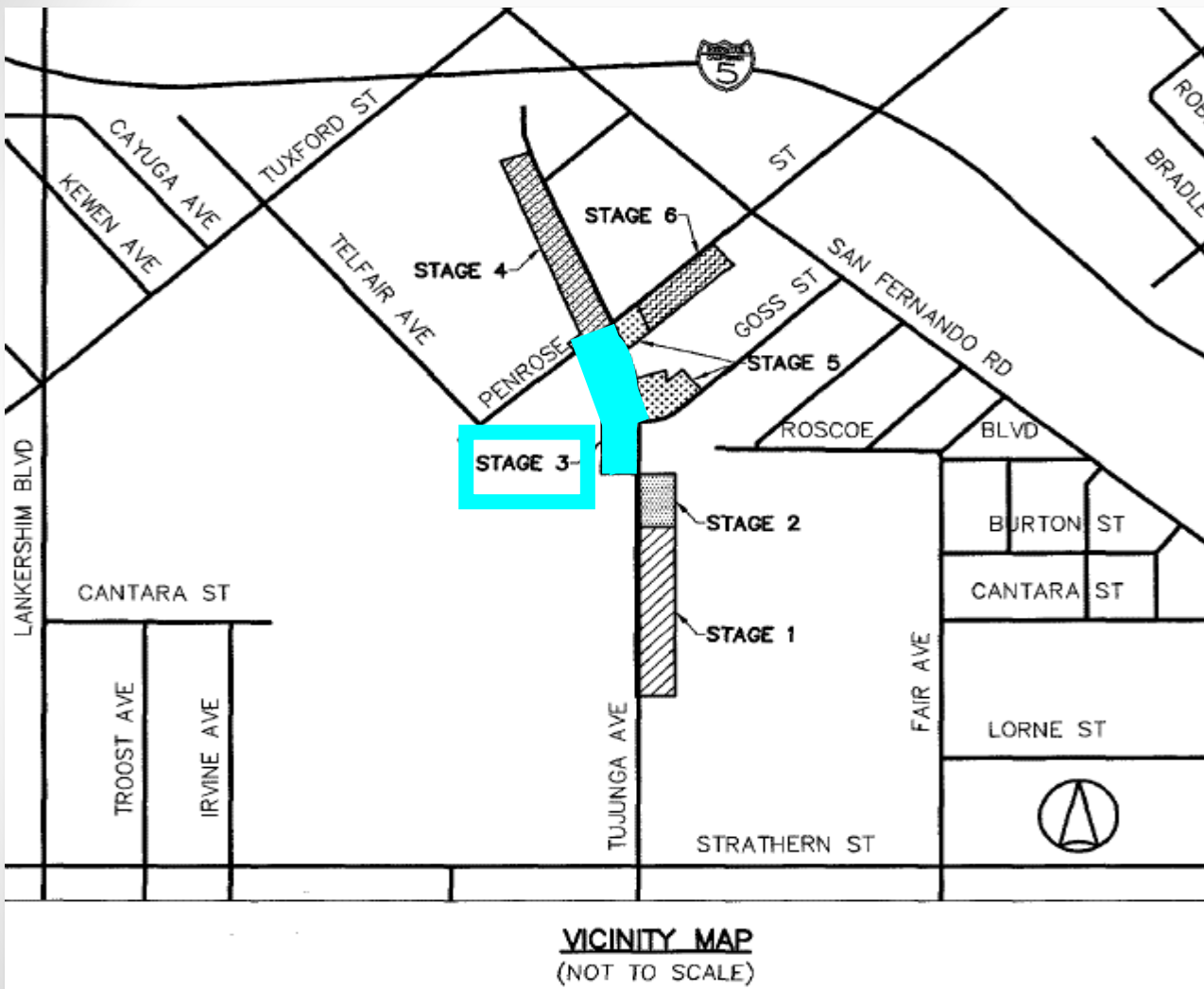


## Stage 2:

**Install 130 feet of mainline pipe on Tujunga Avenue at Goss Street**

- Tujunga Avenue southbound approach will be opened for one lane of traffic.
- Tujunga Avenue northbound approach will be opened for local access only.
- Traffic signs will be posted for detour.
- Construction duration is estimated to be 4 weeks.

# Sun Valley Watershed Upper Storm Drain Phase 1

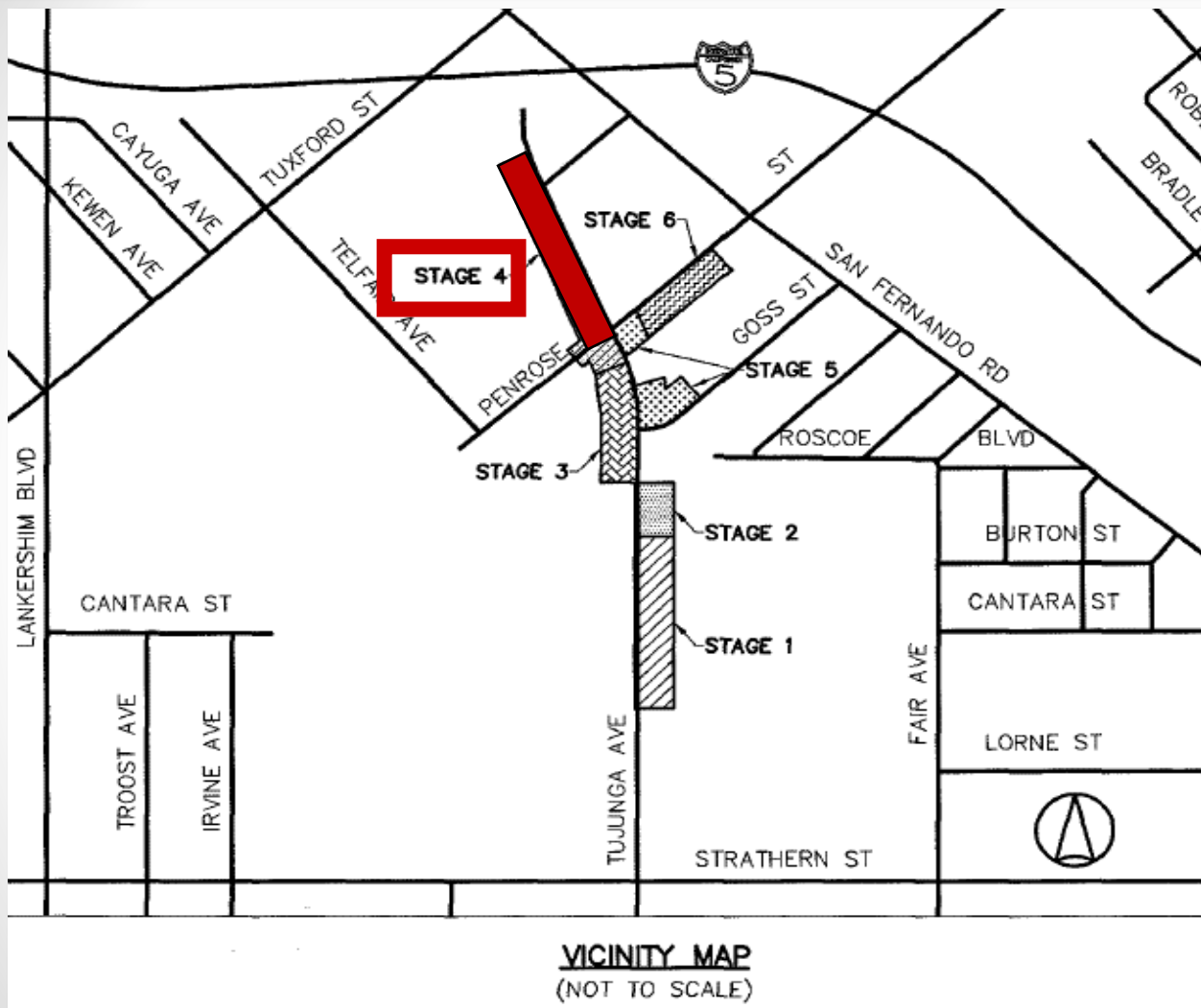


## Stage 3:

Install 595 feet of mainline pipe on Tujunga Avenue from Goss Street to Penrose

- Tujunga Avenue northbound approach will be opened for one lane of traffic
- Tujunga Avenue southbound approach will be closed to through traffic at Penrose St.
- Traffic signs will be posted for detour.
- Construction duration is estimated to be 7 weeks.

# Sun Valley Watershed Upper Storm Drain Phase 1



## Stage 4:

**Install 875 feet of mainline pipe on Tujunga Avenue from Penrose Street to Fleetwood Street**

- Tujunga Avenue southbound approach will be closed to through traffic at Penrose Street
- Penrose Street westbound approach will be closed to through traffic at Tujunga Avenue
- Traffic signs will be posted for detour.
- Construction duration is estimated to be 10 weeks.

# Sun Valley Watershed Upper Storm Drain Phase 1

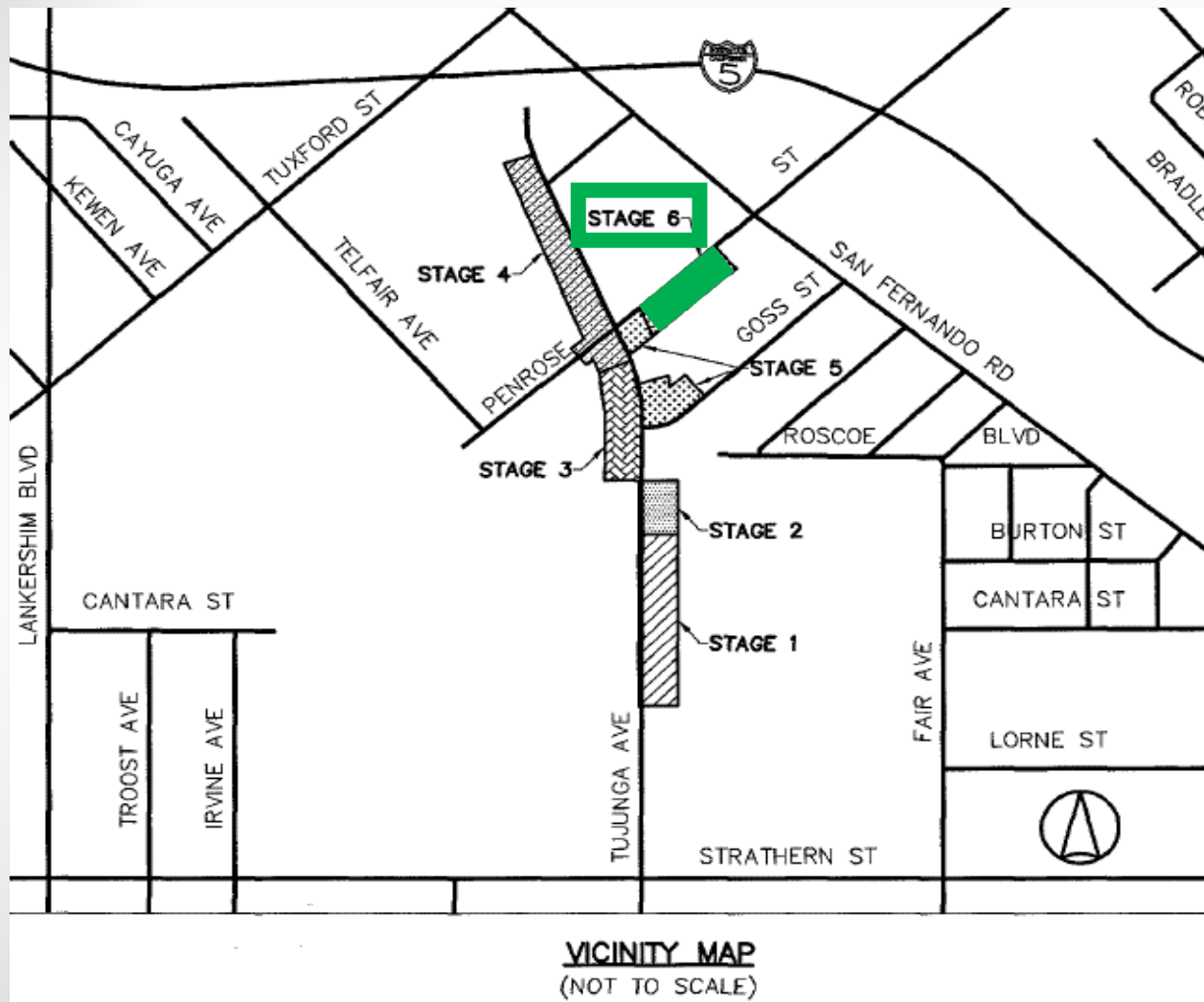


**VICINITY MAP**  
(NOT TO SCALE)

**Stage 5:**  
Install 225 feet of mainline pipe  
on Penrose Street at Tujunga  
Avenue and Tujunga Avenue at  
Goss Street

- Tujunga Avenue and Goss Street will remain open for both directions
- Penrose Street eastbound approach will be closed to through traffic at Tujunga Avenue
- Traffic signs will be posted for detour
- Construction duration is estimated to be 4 weeks

# Sun Valley Watershed Upper Storm Drain Phase 1



## Stage 6:

**Install 475 feet of mainline pipe on Penrose Street from Tujunga Avenue to San Fernando Road**

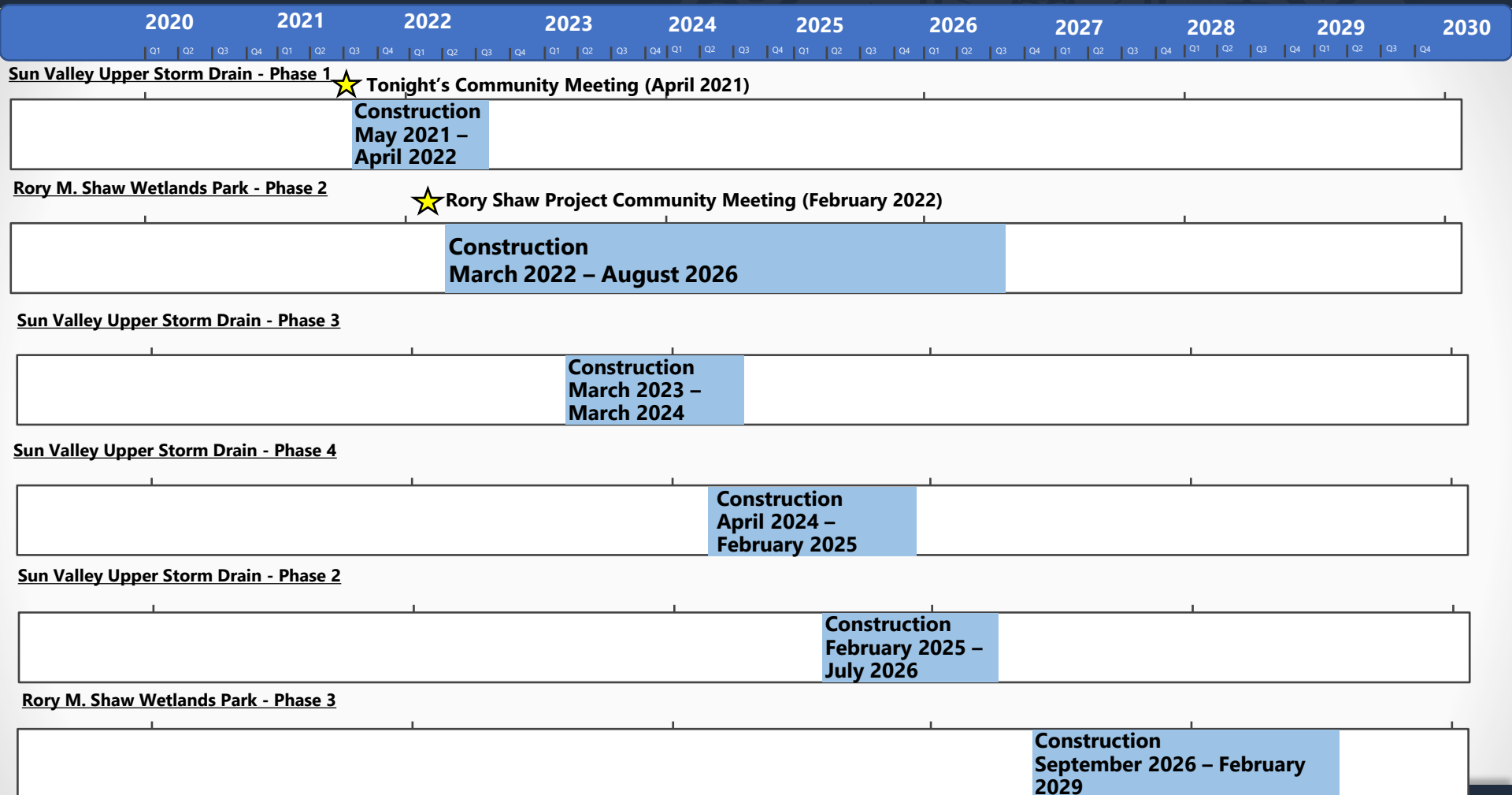
- Penrose Street westbound approach will be opened to through traffic
- Penrose Street eastbound approach will be closed to through traffic at Tujunga Avenue
- Traffic signs will be posted for detour
- Construction duration is estimated to be 7 weeks

# Sun Valley Upper Storm Drain Phases 1

## Post Construction:

- The storm drain and catch basins will not be operational until the complete storm drain system of Phase 2, 3, and 4, and the Rory M. Shaw Wetlands Park are constructed.
- Upon completion of Phase 1, regular maintenance will be conducted.

# Project Schedules



# Project Costs and Funding

- Rory M. Shaw Wetlands Park
  - Phase 1 (Site Investigations and Demolition): \$3 million (Actual)
    - LA County Flood Fund
  - Phase 2 (Earthwork and Rough Grading): ~\$160 million
    - Safe Clean Water Grant (\$10 million)
    - LA County Flood Fund
  - Phase 3 (Above-Ground Improvements): ~\$30 million
    - City of LA Prop O Grant (\$17.8 million)
    - LA County Flood Fund
- Sun Valley Upper Storm Drain
  - Phase 1: \$9.3 million (Actual)
  - Phase 2: ~\$26 million
  - Phase 3: ~\$16.4 million
  - Phase 4: ~\$11 million
  - Funding: LA County Flood Fund



## **5. How to Stay Connected**

# Rory M. Shaw Wetlands Park

To submit comment, feedback or suggestions about the project:

**Online:** [www.sunvalleywatershed.org](http://www.sunvalleywatershed.org)

Click on Contact Us

**Email:** [sunvalleywatershed@pw.lacounty.gov](mailto:sunvalleywatershed@pw.lacounty.gov)

**Phone:** Kenny Chow  
(626) 458-7163  
6:30 am to 5:15 pm  
Monday –Thursday

# Sun Valley Watershed Upper Storm Drain Phase 1

To submit comment, feedback or suggestions about the project:

**Online:** [www.sunvalleywatershed.org](http://www.sunvalleywatershed.org)

Click on Contact Us

**Email:** [pcrosby@pw.lacounty.gov](mailto:pcrosby@pw.lacounty.gov)

[arcorrea@pw.lacounty.gov](mailto:arcorrea@pw.lacounty.gov)

**Phone:** Precious Crosby  
(626) 458-3914  
7:15 am to 5:30 pm  
Monday –Thursday

For Spanish speakers:  
Art Correa  
(626) 458-3948  
7:15 am to 5:30 pm  
Monday –Thursday

# Sun Valley Watershed Website

SunValleyWatershed.org

## Sun Valley Watershed

Enhancing the community and enriching lives



[About](#) [Projects](#) [Resources](#) [Contact Us](#)



**The Sun Valley Watershed** is located in the San Fernando Valley, approximately 14 miles northwest of downtown Los Angeles. It encompasses the communities of Sun Valley and North Hollywood in the City of Los Angeles.



# Sign Up for Email Updates

## Sign up on the Sun Valley Watershed website

- Bottom of each webpage has an option to sign up.
- General updates are sent quarterly.
- Any important announcements will also be sent.



Learn more about **Sun Valley Watershed**

Email Address

SUBMIT

Los Angeles County  
Public Works

# Questions / Answers

**Please type questions in the  
Q&A feature.**