

Sun Valley Watershed Project:

Watershed Explorers

FIELD GUIDE

4 – 5



Explorer's Name



TREEPEOPLE

Dear Explorer

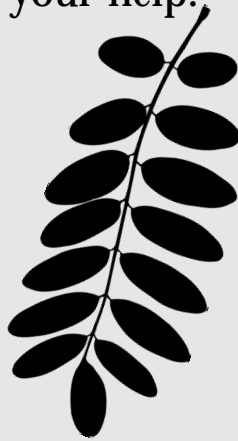
We need your help!

The community of Sun Valley needs you to investigate your school and home, and find a way to help make the land healthy and green!

Use this Field Guide to help you.

When you finish filling it out, you will receive a **surprise** from TreePeople!

Thanks for your help!



Watershed Words

City Forest

The trees, bushes, flowers, grass, birds, insects, pets, sun, soil, water and air in your city

Watershed

An area of land that gathers water and directs it to the ocean or another body of water

Land

The ground
Streets, sidewalks and playgrounds cover the land.

Land Pollution

The trash dropped on the land, such as gum, food wrappers, cans, paper and plastic bags. This includes pet waste, oil dripped from cars and pesticides sprayed on gardens.

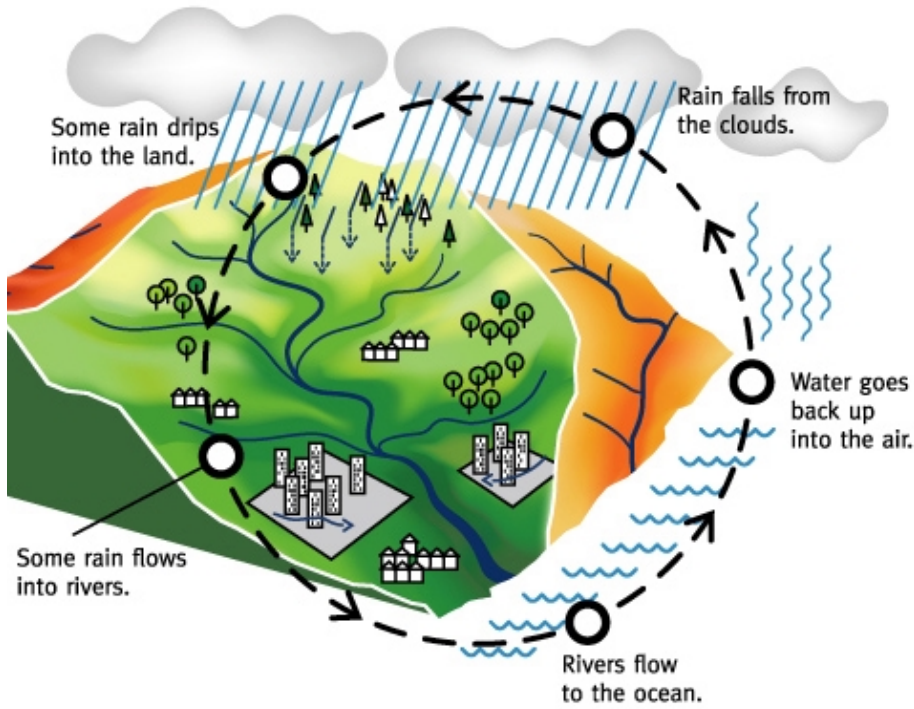
Mulch

Leaves, branches and sticks that fall from a tree and lay on the land.
Mulched soil acts like a sponge so water can easily drip down into the aquifer.

Aquifer

An area in the soil that is like a large underground pool that holds water.
The water held in aquifers is called “groundwater.” We can use clean groundwater for our water needs.

The Water Cycle





When rain falls on healthy soil, trees and plants, it drips down into the land where it is saved in aquifers. Later, we can use the water from aquifers for our everyday needs such as drinking, cooking and washing.

When rain falls and mostly hits streets, parking lots and playgrounds, it flows over these hard surfaces instead of soaking into the land. It then carries land pollution as it flows to the ocean, where the water is wasted. We cannot use this water.

When water is wasted we have to get our water from different places around California.

Where does our water come from?

In Los Angeles, we get water from four sources. Fifteen percent of our drinking water comes from the rainwater that is allowed to seep into the ground. The rest comes from the Sacramento River, the Eastern Sierra and the Colorado River.

When we have to bring water to our city, it costs a lot of money. Reducing our need to import water would save us money and help restore the environments of places like San Francisco Bay – Sacramento Delta by not taking away their water.

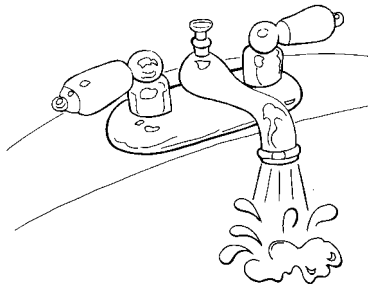
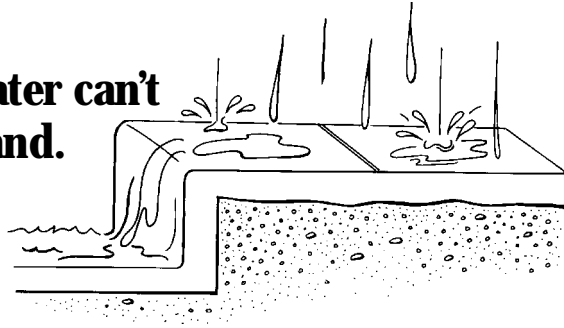


5

*Courtesy of the City of Los Angeles,
Department of Water and Power*

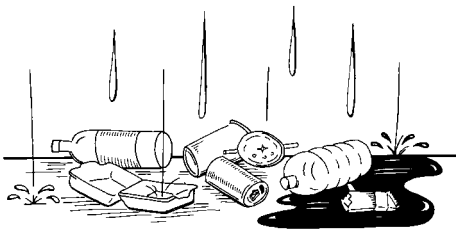
How is water wasted in our community?

Sometimes water can't get into the land.



Sometimes too much water goes down the drain.

Sometimes the land is too hard.



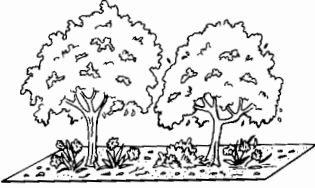
Sometimes water gets polluted.

What is happening at your school?

Using a map of your school, find the following and mark on your map using a green marker:

Healthy trees

These are large, well-established trees.



How many did you find? _____

Soft soil with mulch

A good layer of mulch covers the soil. The soil feels soft when you press your finger into it.



How many places did you find? _____

Bushes and gardens

Gardens with flowers and plants help the soil, look nice and allow rainwater to get in.



How many places did you find? _____

No land pollution

There is no trash left on the ground or evidence of oil and other pollution.



How many places did you find? _____

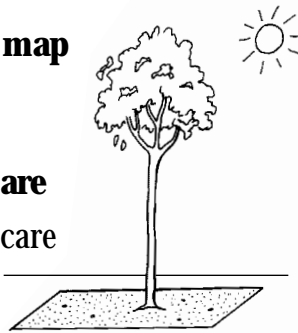
TOTAL _____

The green areas on your map show where water is not being wasted!

Find the following and mark on your map using a red marker:

Young trees that need water and care

These are newly planted trees that need care including regular watering and a berm to hold mulch.



How many did you find? _____

Hard land with no mulch

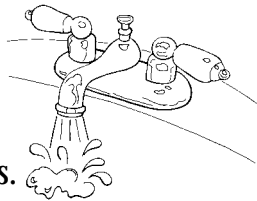
This is hard, compacted dirt. You are unable to press your finger into it.



How many places did you find? _____

Wasted water

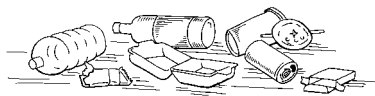
These are places where people can waste water if left on or leaking. They include inside and outside faucets.



How many did you find? _____

Land pollution

There is trash left on the ground, including evidence of oil and other pollution.



How many places did you find? _____

TOTAL _____

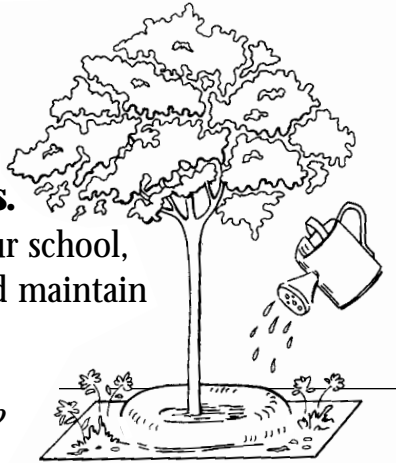
The red areas on your map show places that need help!

What can your class do to help?

Plant and take care of trees.

Take care of trees that live at your school, especially young trees. Water and maintain a berm of mulch around them.

How about planting more trees?
What else can you do for the trees?





Put mulch on hard land.

Put mulch on the land to make it soft and let the rain soak in. Or, grow plants and flowers there.

Plant a garden that doesn't need a lot of water to grow.

What else can you do to help the land?

**Turn off the water.
Every drop counts!**

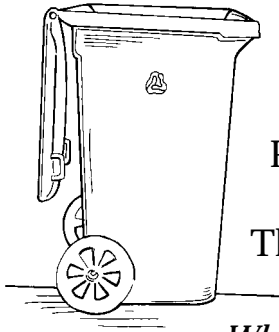


Save water.

Remember to turn off the faucet when you wash your hands.

A lot of water is used at a school. Make other students aware of the need to save water. Remember the more water we save at school the less we need to get from other sources.

What else can you do to save water?



Pick up land pollution.

Pick up trash and put it in the trash can.

This is only part of the problem.

The best way to help is to make less trash!

Reduce, reuse, then recycle.

What else can you do to reduce trash at school?




My Ideas

Draw a picture of one way your class can help the water at your school. Write a paragraph using your watershed words that tells about your picture.

A large, empty rectangular box with a black border, intended for a student to draw a picture and write a paragraph. The box is oriented vertically on the page.

Dear Parent,



As part of the Sun Valley Watershed Project, your child's homework assignment is to conduct a home watershed survey, similar to one they completed at school. A watershed survey is a study of where water flows on the land and a look at ways to help prevent flooding as well as ways to save water.

When it rains in your neighborhood, water comes down and mostly hits streets, parking lots and playgrounds that are covered in concrete. Flooding happens when rain falls faster than the ground can absorb it. When the ground is hard and compacted or paved, water flows over these areas, causing flooding.

When water falls on healthy soil, trees and plants, it is allowed to drip into the soil where it collects in large underground pools called aquifers. This groundwater can be used by the city for our everyday needs. When water is allowed to get into the soil, water will be saved and less water will flow over concrete and cause flooding.

Your child needs your help!

Please go through the homework with your child.

1. Have your child share what he or she has completed in their Guide so far.
2. On page 14, look at the map of California and locate the different places we get our water.
3. With your child, investigate the area where you live and complete pages 15 and 16.
4. Read and discuss pages 17 and 18.
5. Read and complete the drawing and writing assignment on pages 19 and 20.
6. On page 22, have your child draw his or her face in the circle provided.
7. Turn in the Field Guide to the teacher.

Where does our water come from?

Locate the different places we get our water.

Most of the water we use every day for drinking, washing and cooking comes from these different places around California. It costs a lot of money to bring water to Los Angeles.

Reducing our need to import water would save us money and would help restore the environments of places like San Francisco Bay – Sacramento Delta by not taking away their water.

This is why it is important not to waste water!



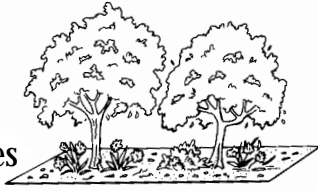
*Courtesy of the City of Los Angeles,
Department of Water and Power*

What is happening where you live?

Find and check the box:

Healthy trees

These are large, well-established trees that capture rainfall on their leaves.



How many did you find? _____

Soft soil with mulch

A good layer of mulch covers the soil. The soil feels soft when you press your finger into it.



How many places did you find? _____

Bushes and gardens

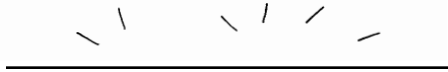
Gardens with flowers and plants help the soil, look nice and allow rainwater to get in.



How many places did you find? _____

No land pollution

There is no trash left on the ground or evidence of oil and other pollution. When water flows across the land it stays clean.



How many places did you find? _____

TOTAL _____

Great!

These are places where water is not wasted!



Young trees that need water and care

These are newly planted trees that need care including regular watering, and a berm to hold mulch.

How many did you find? _____

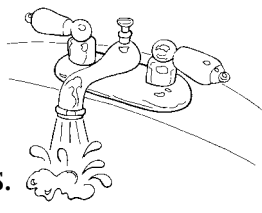
Hard land with no mulch



This is hard, compacted dirt. You are unable to press your finger into it.

How many places did you find? _____

Wasted water



These are places where people can waste water if left on or leaking. They include inside and outside faucets.

How many did you find? _____

Land pollution



There is trash left on the ground, including evidence of oil and other pollution.

How many places did you find? _____

TOTAL _____

These are places that need help!

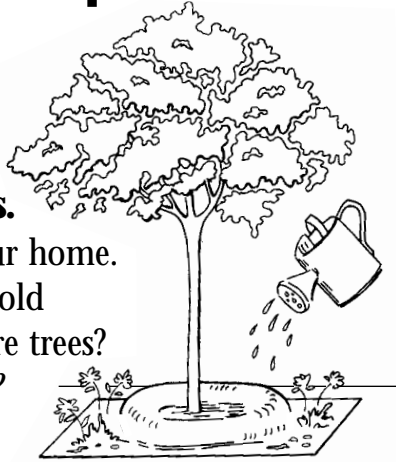
What can your family do to help?

Plant and take care of trees.

Take care of trees that live at your home.

Water and maintain a berm to hold mulch. How about planting more trees?

What else can you do for the trees?





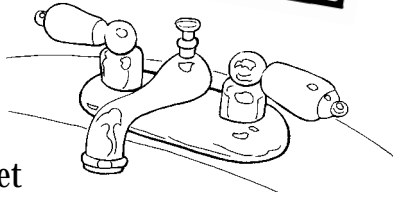
Put mulch on hard land.

Put mulch on the land to make it soft and let the rain soak in. Or, grow plants and flowers there.

Plant a garden that doesn't need a lot of water to grow.

What else can you do to help the land?

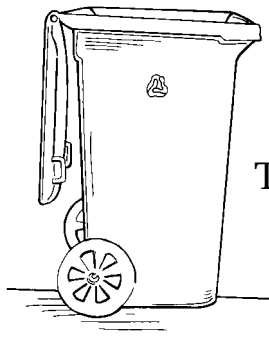
**Turn off the water.
Every drop counts!**



Save water.

Remember to turn off the faucet when you wash your hands or brush your teeth. Use low-flow shower heads and toilets. Fix leaky faucets and sprinklers. Remember, the more water we save at home the less we need to get from other sources.

What else can you do to save water?



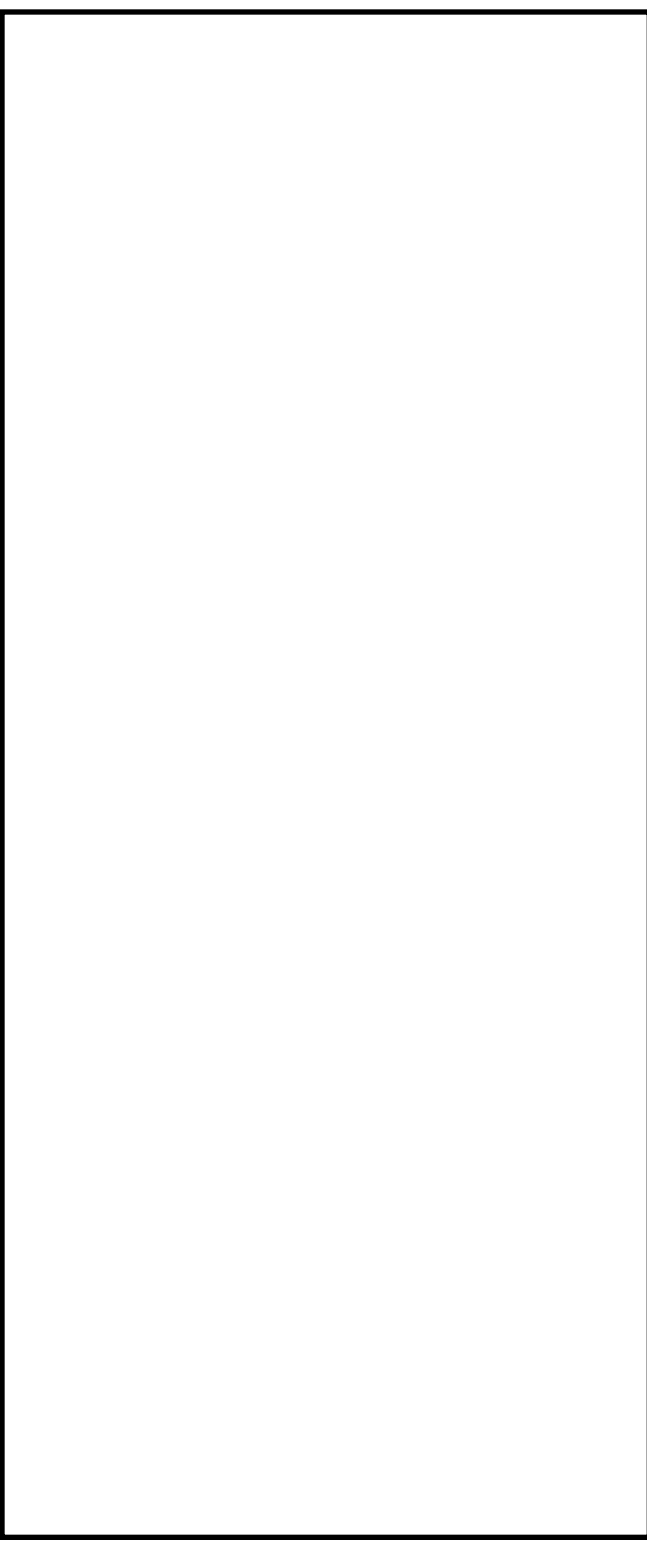
Pick up land pollution.

The best way to help is to make less trash! Think of ways to reduce the amount of trash created, reuse items when you can and recycle! Also, dispose of used motor oil and other toxins at a hazardous waste disposal site.

What else can you do to reduce trash at home?

Our Ideas

Ideally, what would you like your community to look like? Imagine the land healthy and green. Draw a picture of your ideal community. Write a paragraph using your watershed words that tells about your picture.



What Else Can You Do?

If you would like to know more about how to help with greening efforts in Sun Valley, there are a number of ways you can help or show your support:

- Go online at:
www.sunvalleywatershed.org
www.ladpw.org/wmd
www.treepeople.org
- Call or e-mail:
Vik Bapna
L.A. County Department of Public Works
626-458-4363
vbapna@ladpw.org

Rebecca Drayse
TreePeople
818-623-4867
Rdrayse@treepeople.org

Congratulations!

You Have Completed the Activities in Your Field Guide

1. Draw a picture of yourself in the circle below.
2. Return the Field Guide to your teacher.

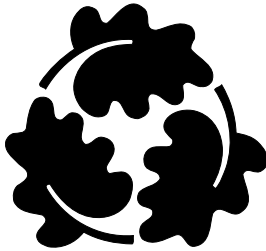


Name: _____ Room Number: _____

This Field Guide was published by TreePeople with funding provided by the Watershed Management Division of the County of Los Angeles Department of Public Works and CalFed Bay-Delta Program.



CALFED
BAY-DELTA
PROGRAM



TREEPEOPLE

12601 Mulholland Dr.
Beverly Hills, CA 90210
(818) 753-4600

© October 2002
www.sunvalleywatershed.org